

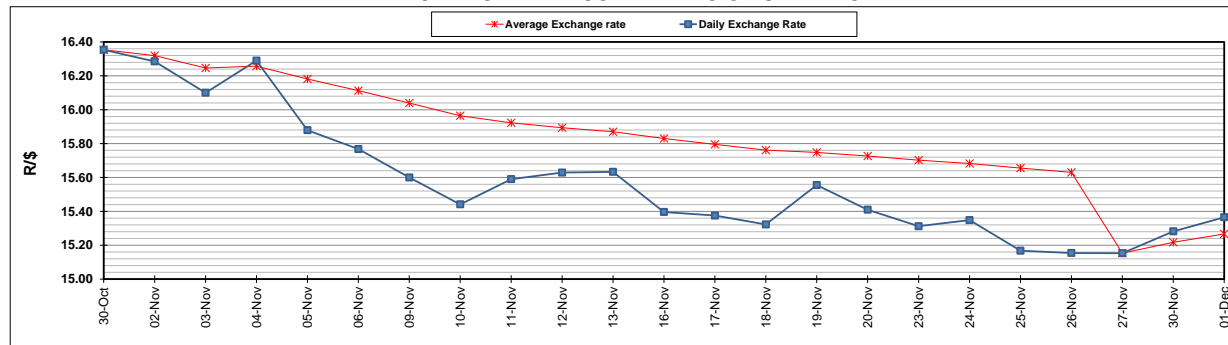
	PETROL 95 ULP	PETROL 93 ULP & LRP	DIESEL 0.05%	DIESEL 0.005%	ILL. PAR.
GAUTENG PUMP PRICE (SA c/l) AS FROM 02/12/2020	1,446.000	1,426.000	-	-	-
WHOLESALE PRICE (SA c/l) AS FROM 02/12/2020	-	-	1,245.420	1,247.820	684.688
SINGLE NATIONAL MAXIMUM RETAIL PRICE	-	-	-	-	856.000
BASIC FUEL PRICE - 01/12/2020 (SA c/l)	506.843	498.589	528.313	529.381	513.613
PRESS RELEASE CONTRIBUTION TO BFP 27/11/2020 - 01/12/2020 (SA c/l)	506.470	496.470	474.630	477.030	451.128
UNIT OVER/(UNDER) RECOVERY - 01/12/2020 (SA c/l)	(0.373)	(2.119)	(53.683)	(52.351)	(62.485)
AVERAGE BASIC FUEL PRICE 27/11/2020 - 01/12/2020	509.297	501.531	528.035	529.072	511.659
AVERAGE UNIT OVER/(UNDER) RECOVERY 27/11/2020 - 01/12/2020	(2.827)	(5.061)	(53.405)	(52.042)	(60.531)

### ANALYSIS MOVEMENT OF AVERAGE OVER/(UNDER) RECOVERY

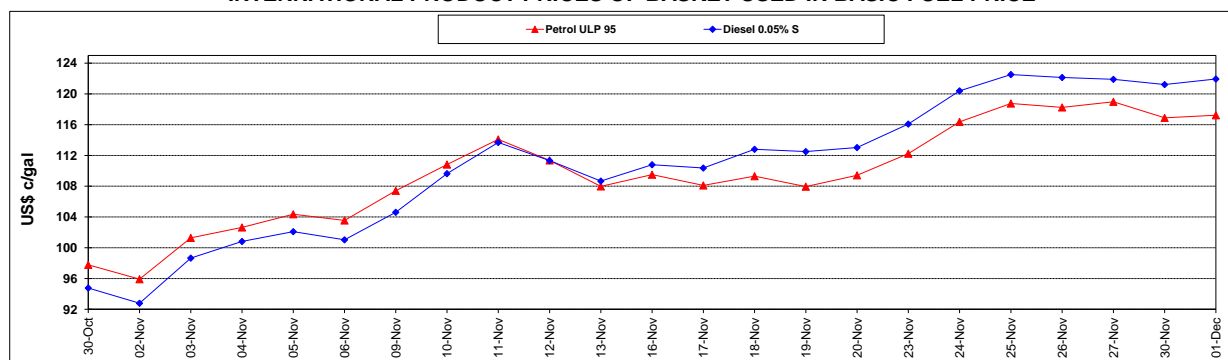
	PETROL 95	PETROL 93	DIESEL 0.05%	DIESEL 0.005%	ILL. PAR.
- MOVEMENT IN INTERNATIONAL PRODUCT PRICES	(14.963)	(17.012)	(65.988)	(64.650)	(72.724)
- MOVEMENT IN EXCHANGE RATE	12.136	11.951	12.583	12.608	12.193
AVERAGE UNIT OVER/(UNDER) RECOVERY 27/11/2020 - 01/12/2020	(2.827)	(5.061)	(53.405)	(52.042)	(60.531)

### R/\$ EXCHANGE RATE - (R/\$15.3653 - 01/12/2020)

#### EXCHANGE RATE USED IN BASIC FUEL PRICE



#### INTERNATIONAL PRODUCT PRICES OF BASKET USED IN BASIC FUEL PRICE



#### BASIC FUEL PRICE IN SA CENTS PER LITRE

